



Australian Government

THE LEONA M. AND HARRY B.
HELMSLEY
CHARITABLE TRUST



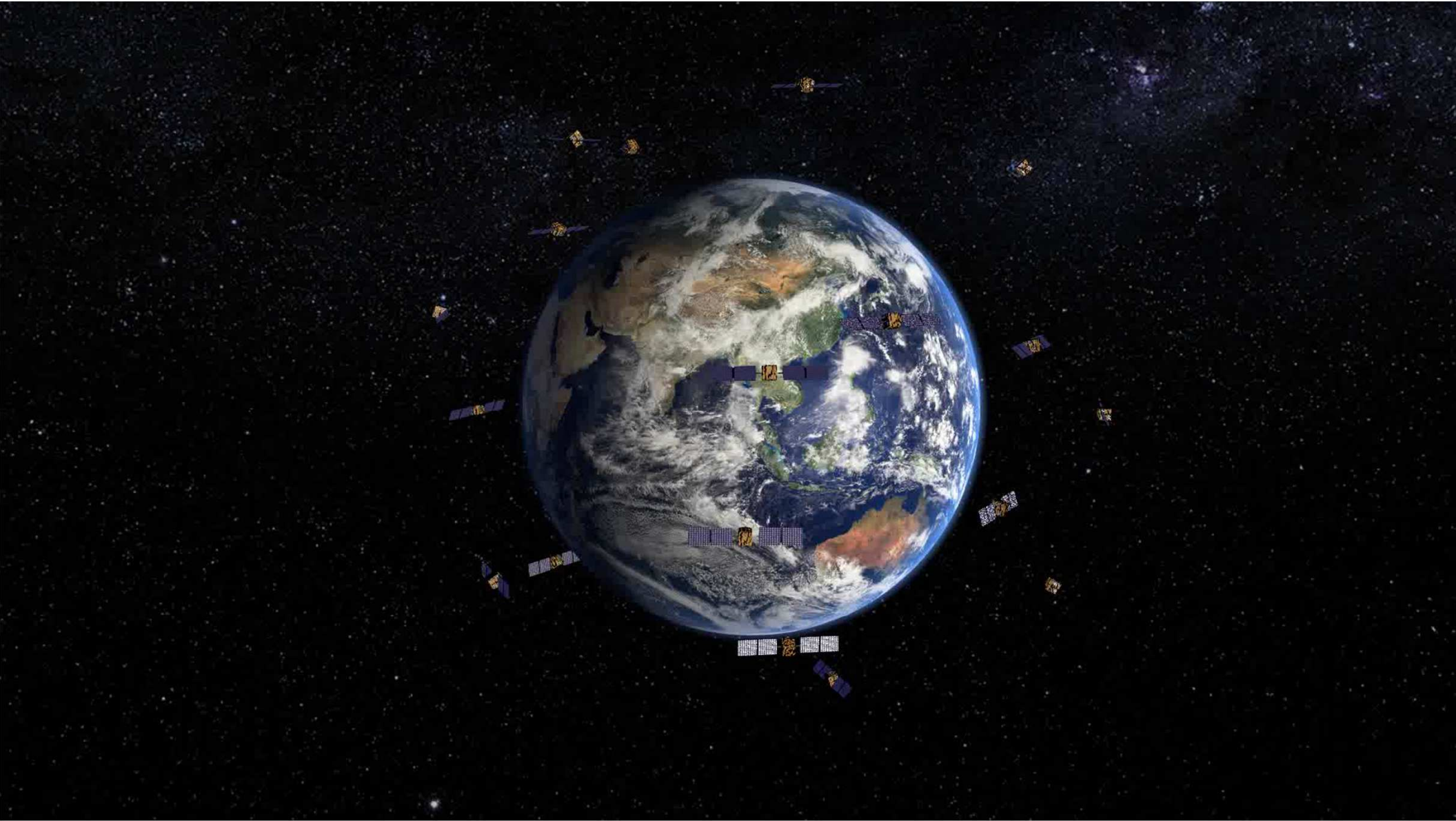
Digital Earth
AFRICA

Digital Earth Africa & Australia: Big Earth Data for SDGs

Dr Stuart Minchin,
Geoscience Australia

GEO GROUP ON
EARTH OBSERVATIONS

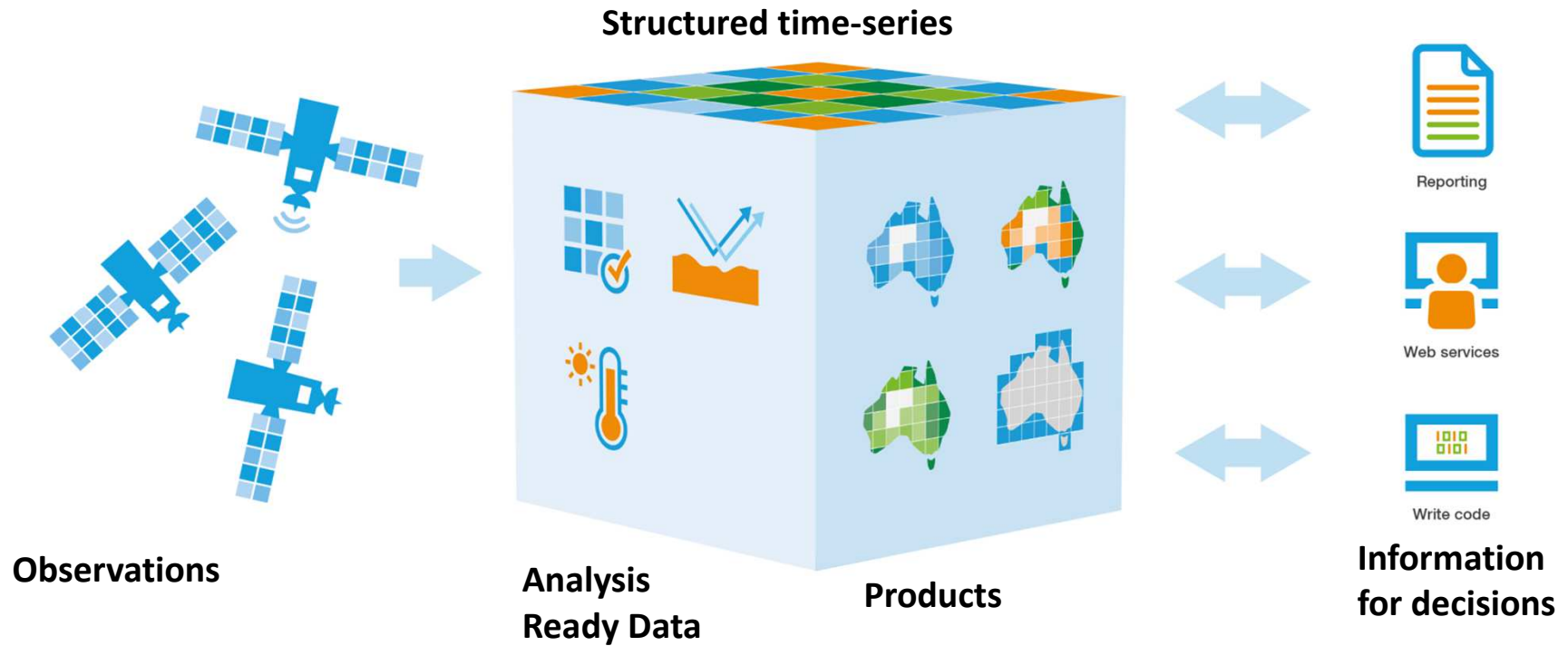


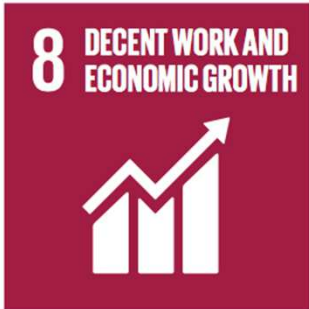




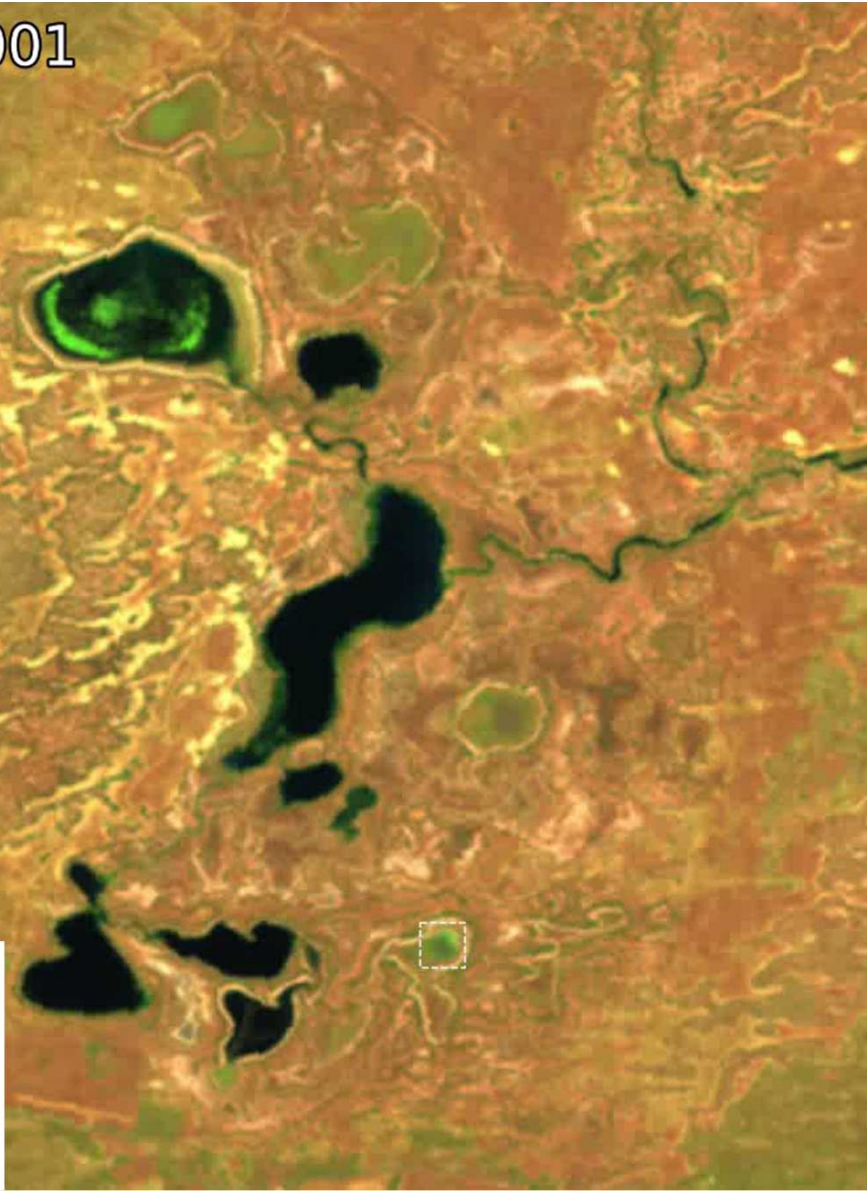


Digital Earth Australia





7 Jan 2001



6 CLEAN WATER AND SANITATION



ACT : Ginini Flats Wetland Complex



6 CLEAN WATER
AND SANITATION

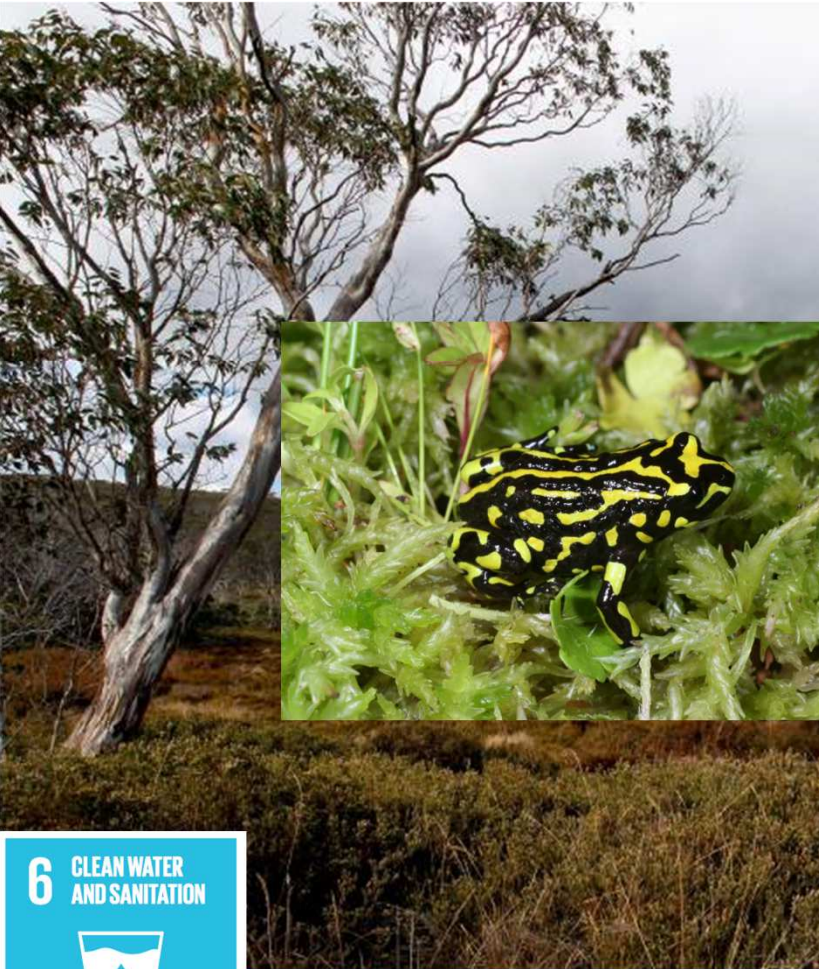


SCIENCE AUSTRALIA



© Commonwealth of Australia
(Geoscience Australia) 2017

ACT : Ginini Flats Wetland Complex

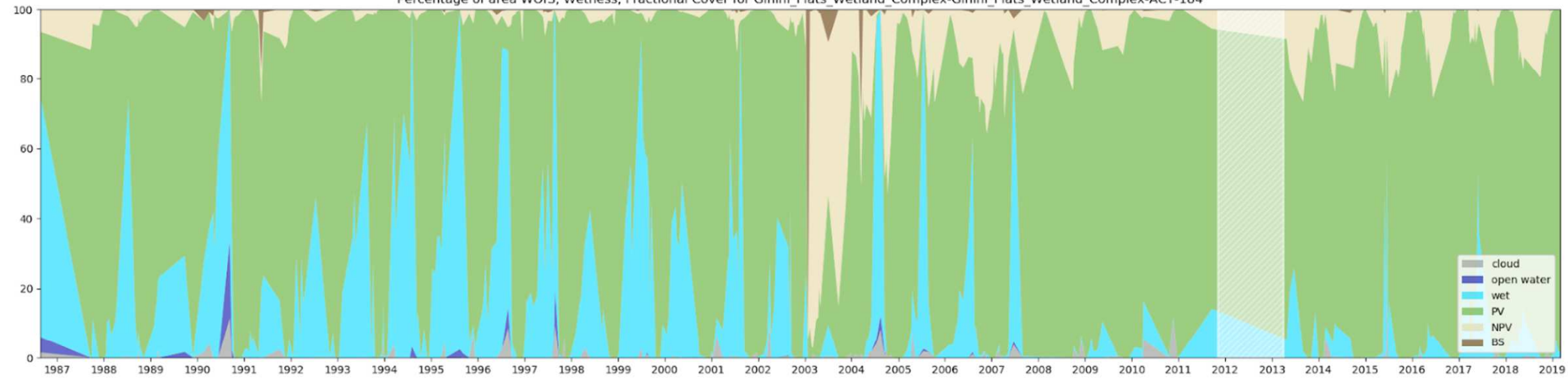


6 CLEAN WATER AND SANITATION

ACT : Ginini Flats Wetland Complex



Percentage of area WOFS, Wetness, Fractional Cover for Ginini_Flats_Wetland_Complex-Ginini_Flats_Wetland_Complex-ACT-184



6 CLEAN WATER AND SANITATION

Local Scale Water Quality Monitoring: Lake Burley Griffin

1987

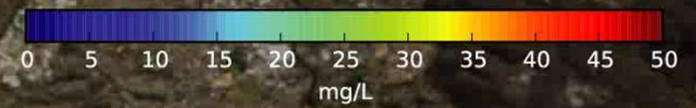
2001

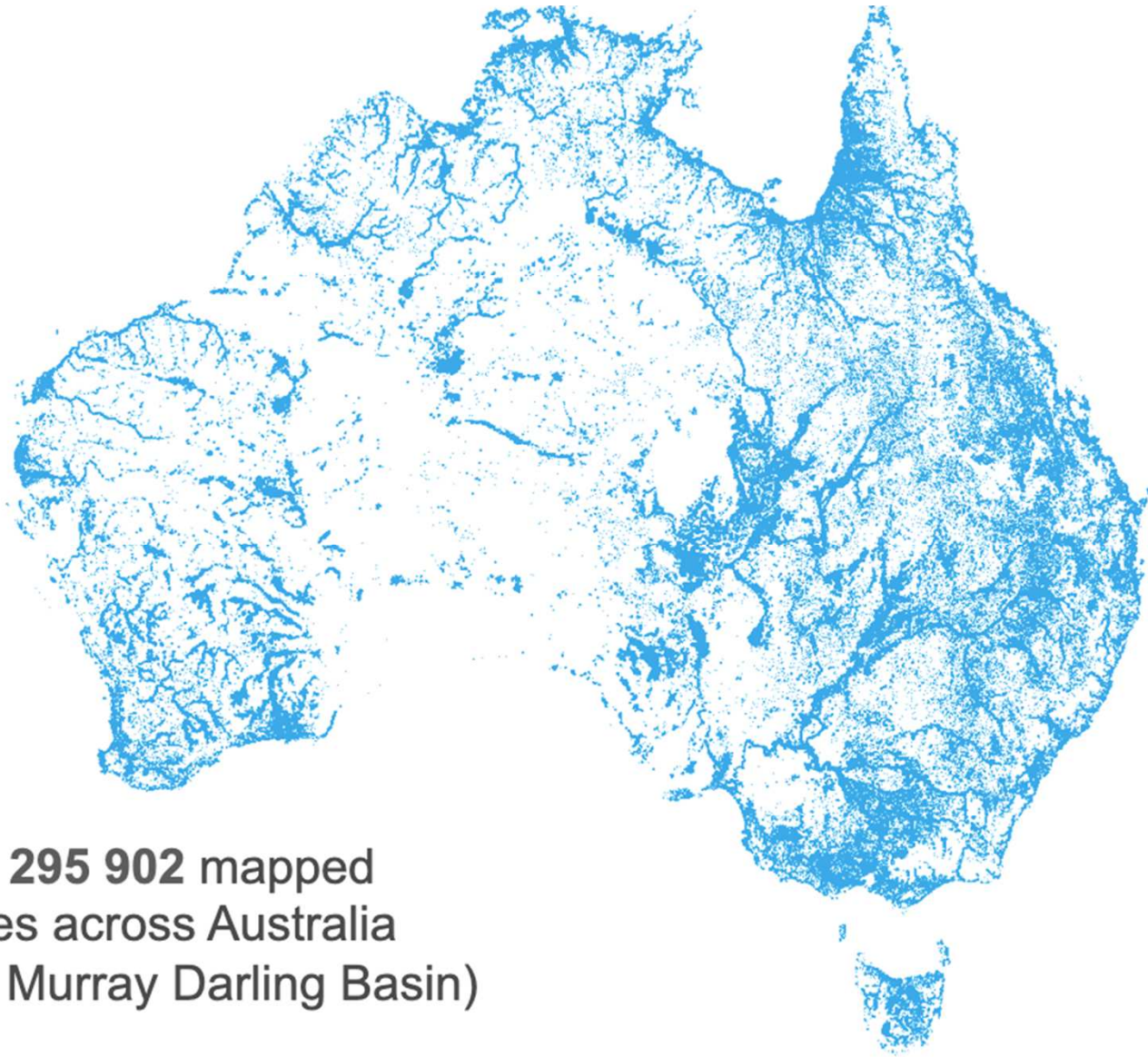
2013



325

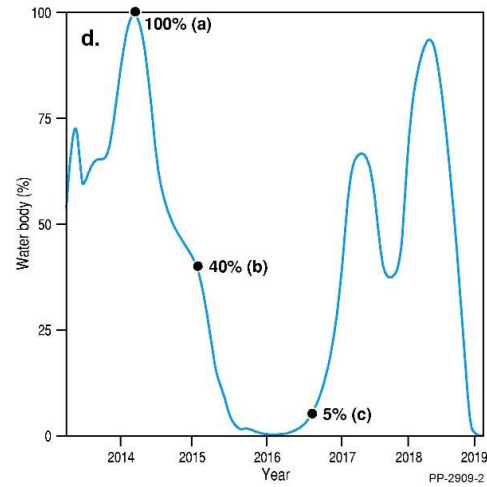
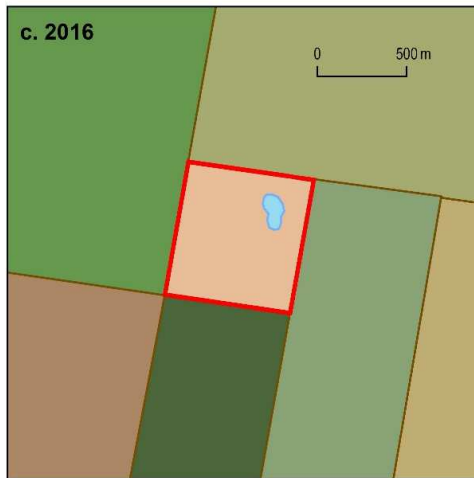
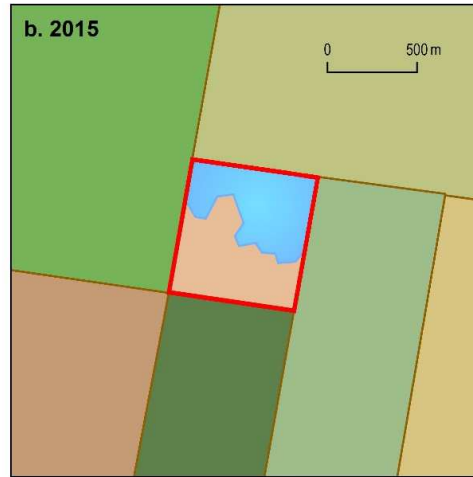
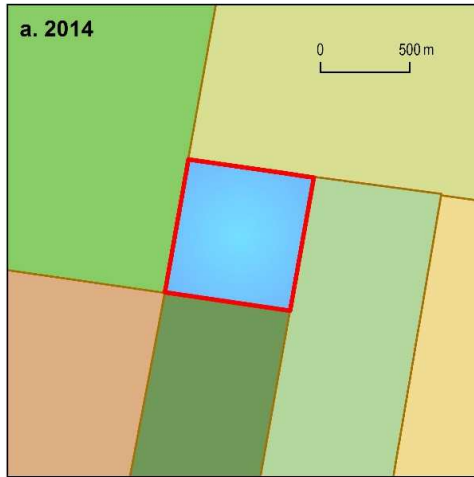
0





There are **295 902** mapped waterbodies across Australia (58 493 in the Murray Darling Basin)





Search for locations

+ Add data ↻

DATA SETS [2] Remove All

Water Body 202958

Zoom To About This Data Remove

Percentage

Pixel Count

LSA Wet Pixel Pct

Waterbody Area Mapping and Monitoring

Zoom To Extent About This Data Split Export Remove

Opacity: 100%

Time: 01/01/2019, 11:00:00



Feature Information

Waterbody Area Mapping and Monitoring - Site Data

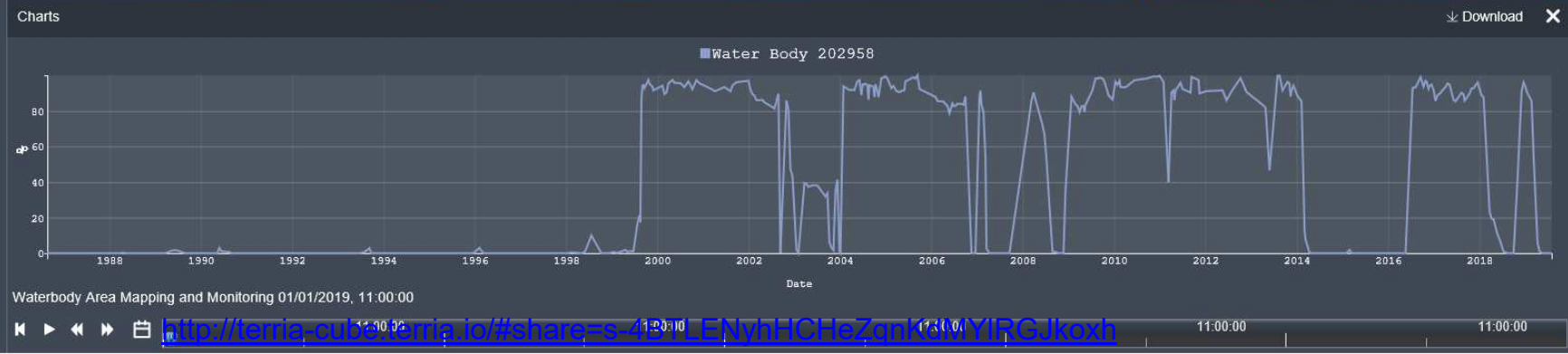
Water Body Identifier: 202958

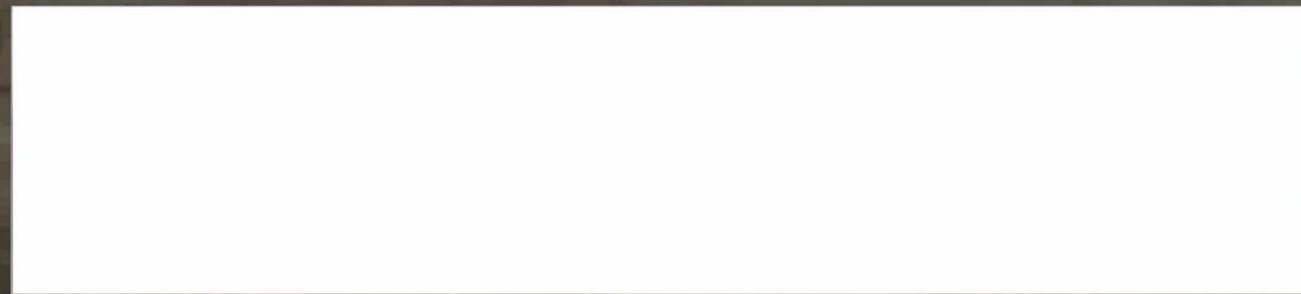
Show Raw Data

Expand

Water Observed

Lat / Lon 30.11199°S, 149.19284°E





- green
- dry
- soil

1988

2000

2006

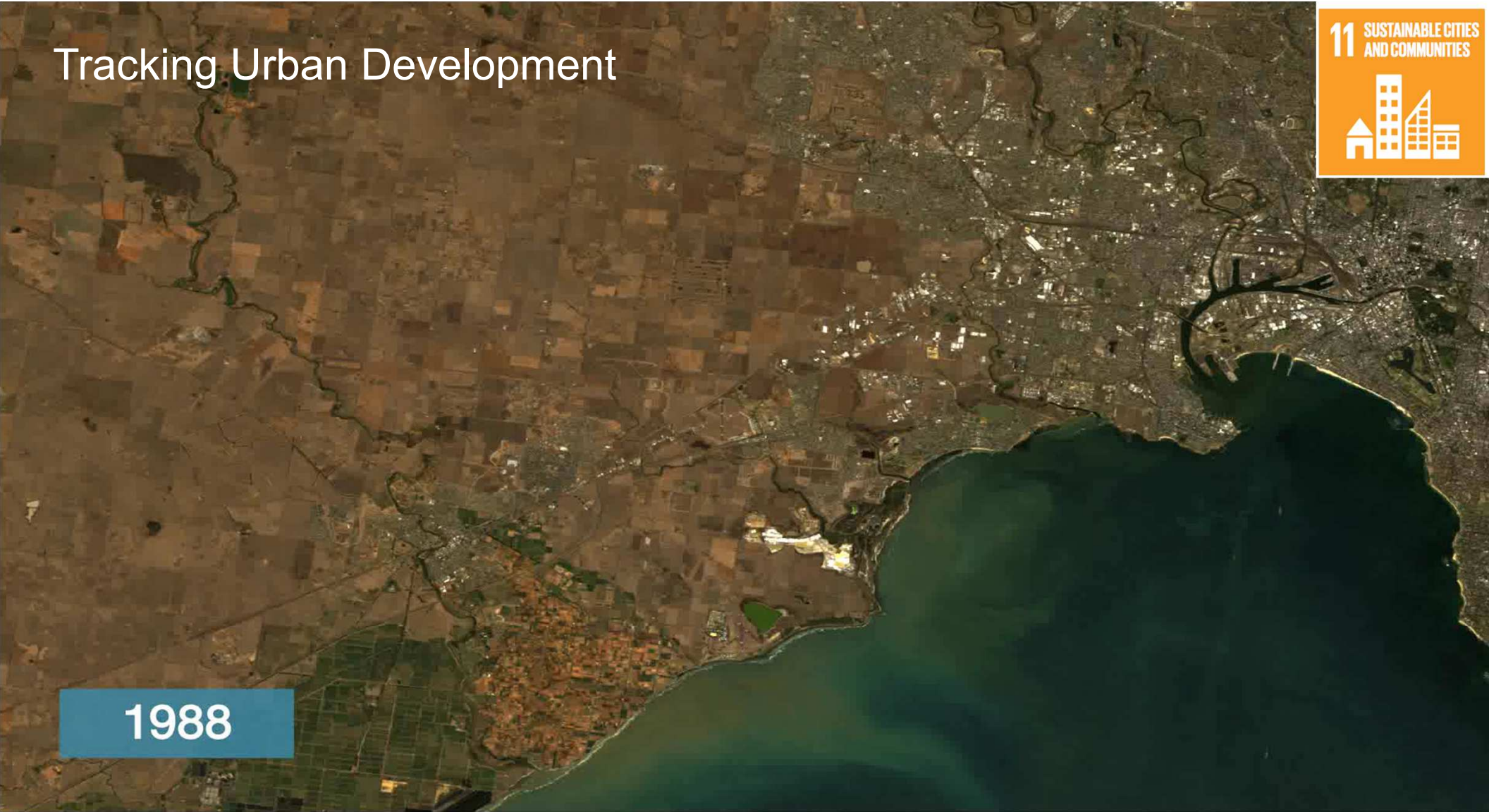
2014



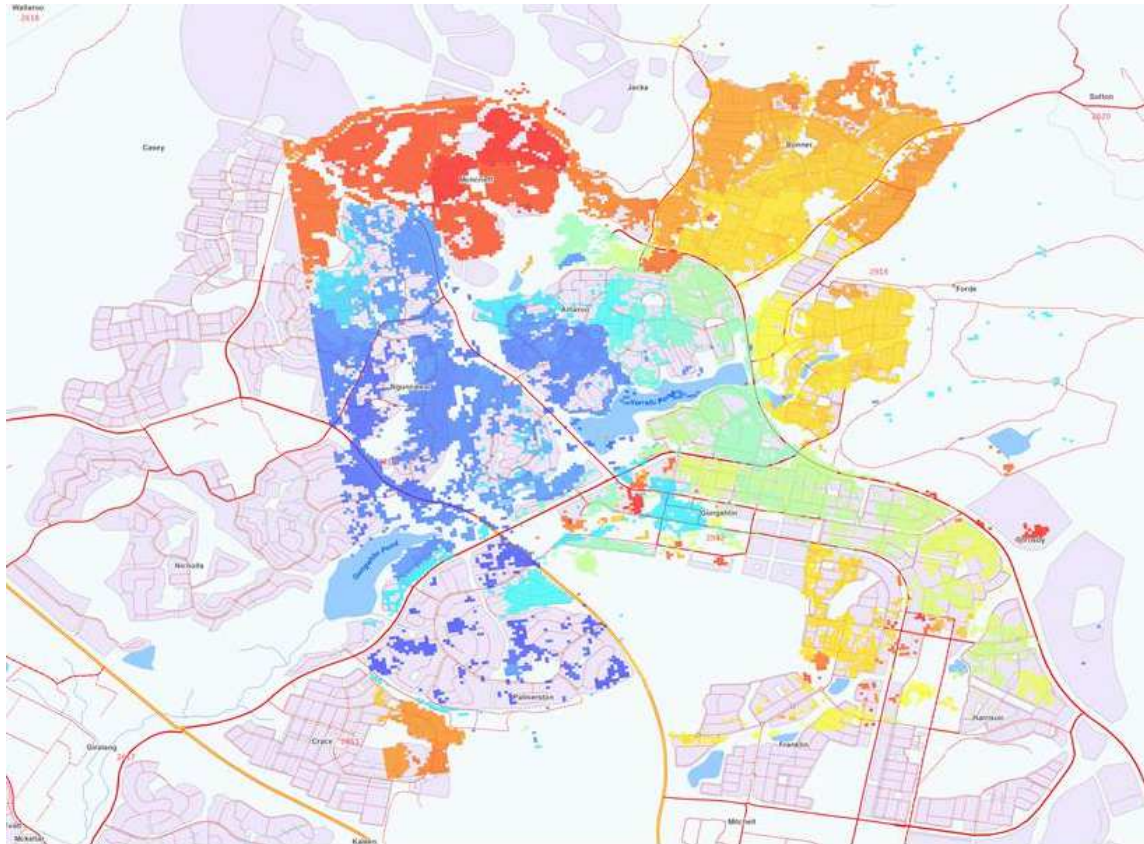
Tracking Urban Development



1988



Urban Development in Northern Canberra





1987

32 years of coastal erosion at Point Stuart, NT

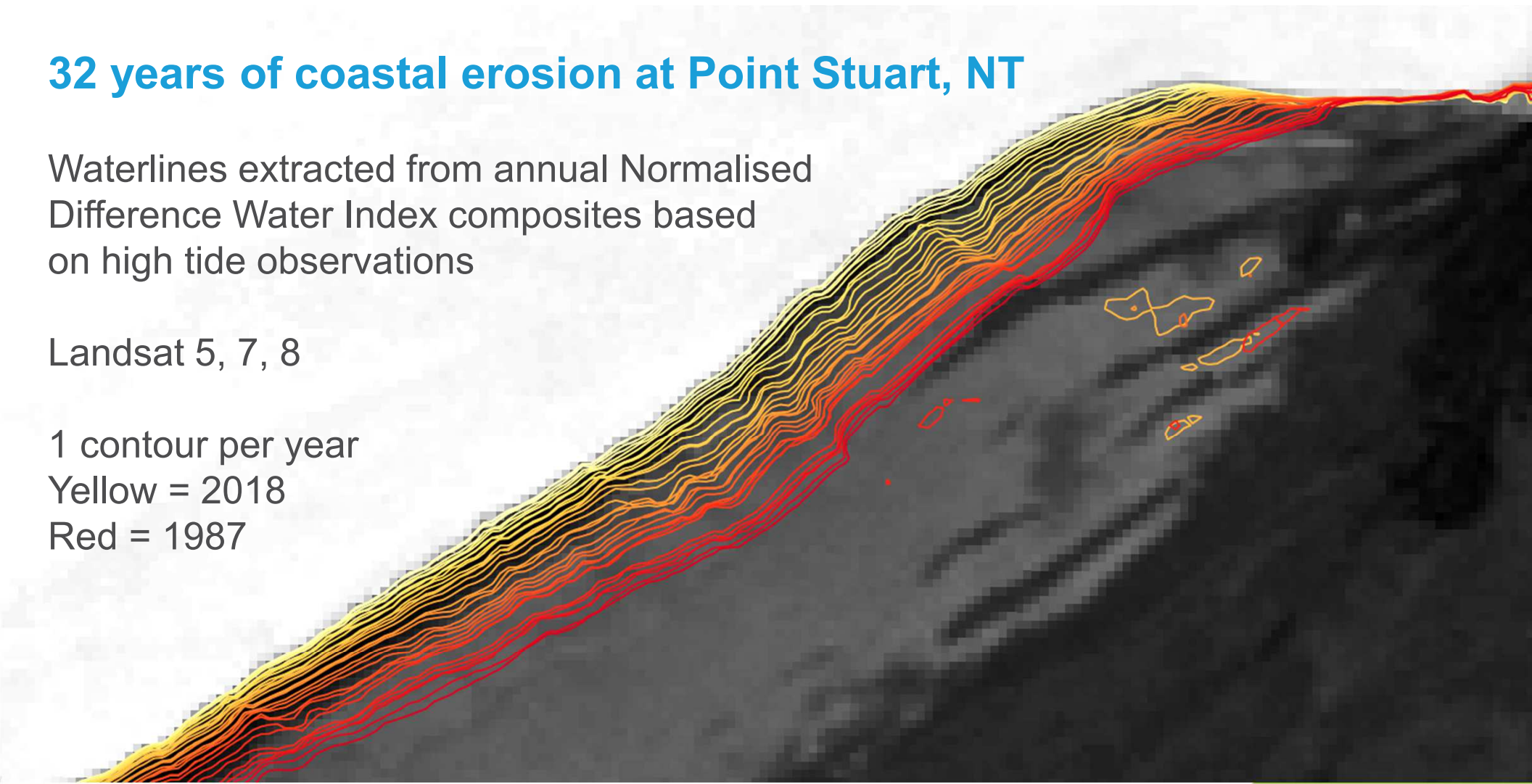
Waterlines extracted from annual Normalised Difference Water Index composites based on high tide observations

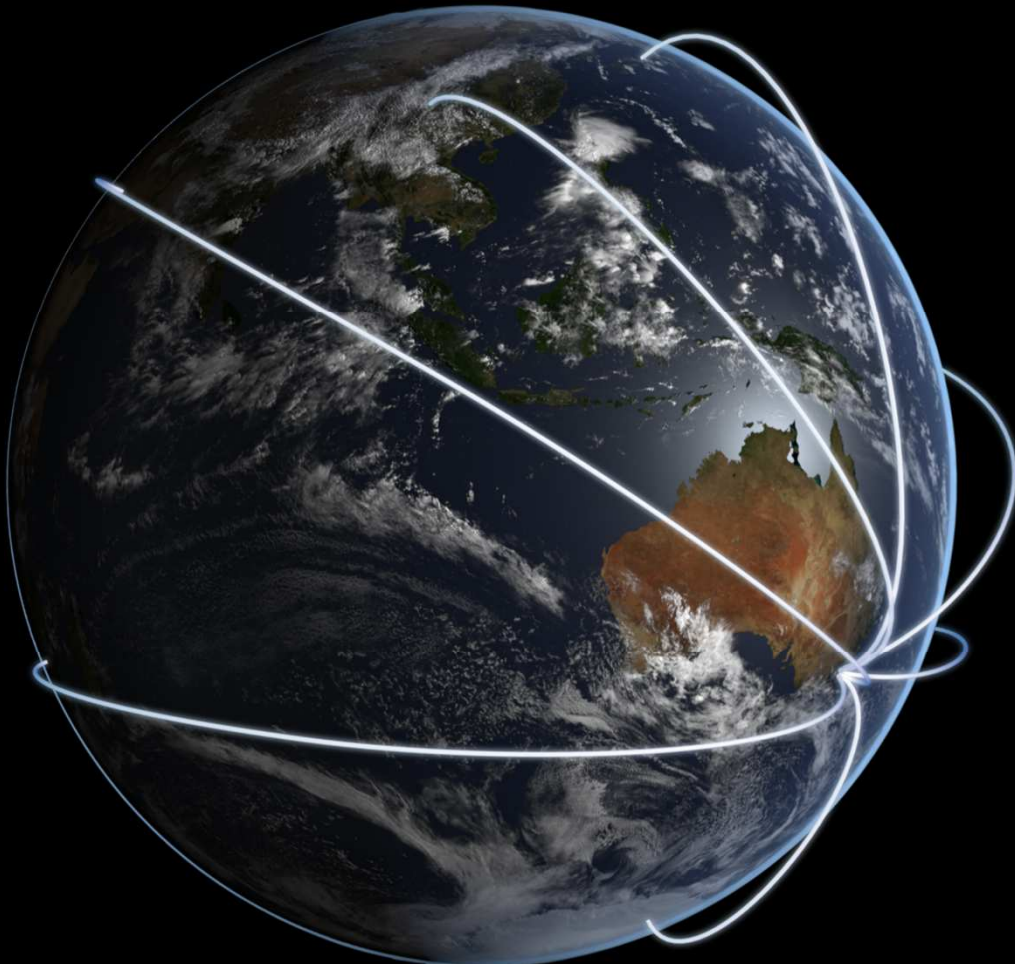
Landsat 5, 7, 8

1 contour per year

Yellow = 2018

Red = 1987



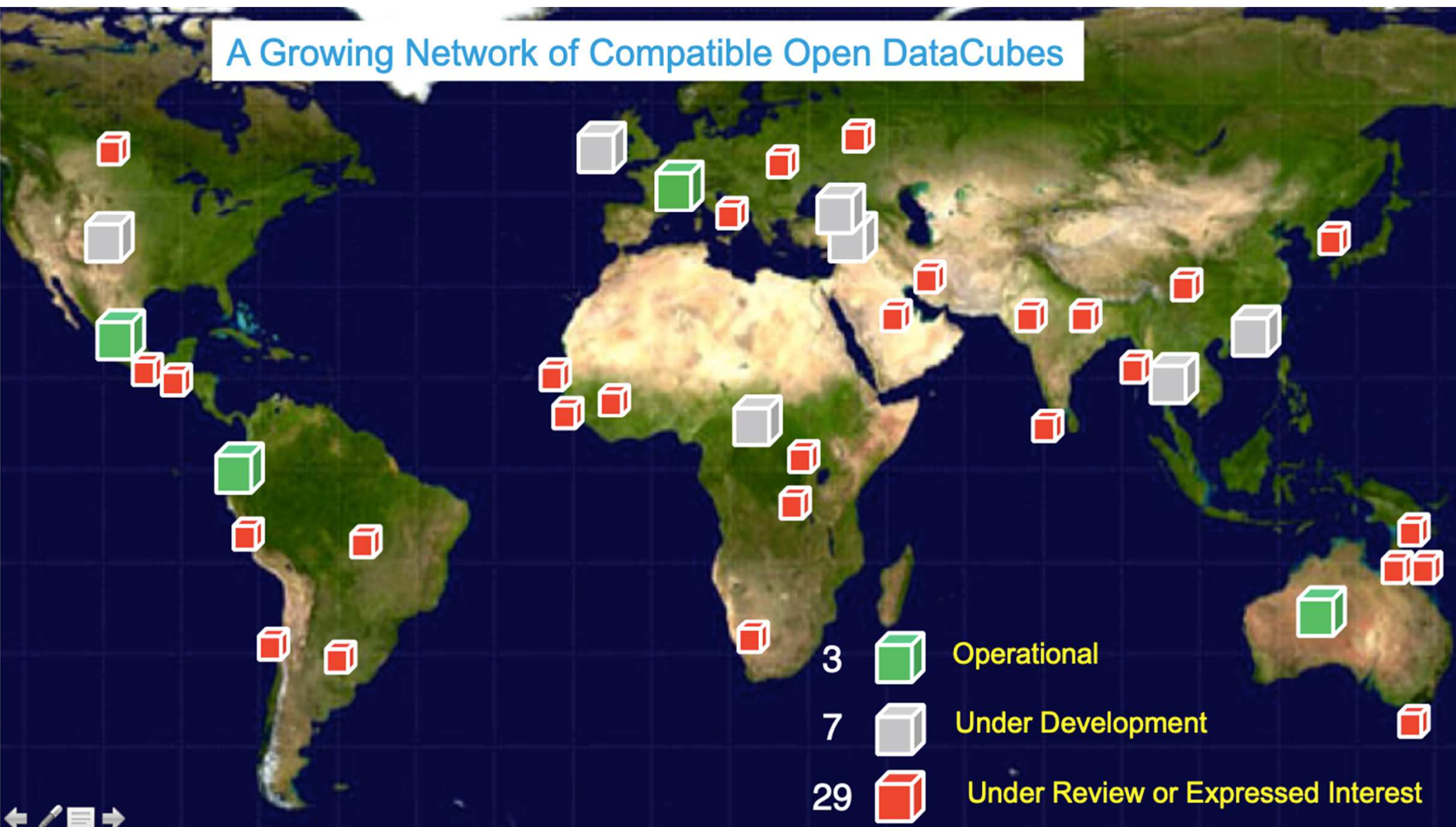


Data Cubes for:

Africa, Antarctica, China, India,
Europe, North America, ...

Connecting the EO, Spatial and Statistical
world to support global SDGs?

A Growing Network of Compatible Open DataCubes





Countries

- Tanzania
- Kenya
- Senegal
- Sierra Leone
- Ghana
- Uganda
- **South Africa**
- **Rwanda**
- **Botswana**
- **Cote d'Ivoire**
- **Malawi**
- **Gabon**
- **Ethiopia**

Use Cases

- Agriculture
- Land degradation
- Water quality and extent
- Disease/pests
- Deforestation
- Illegal mining
- Urban growth
- Flood risk
- Unplanned settlements
- Wildfires
- Mangroves
- Landslides
- SDG indicators

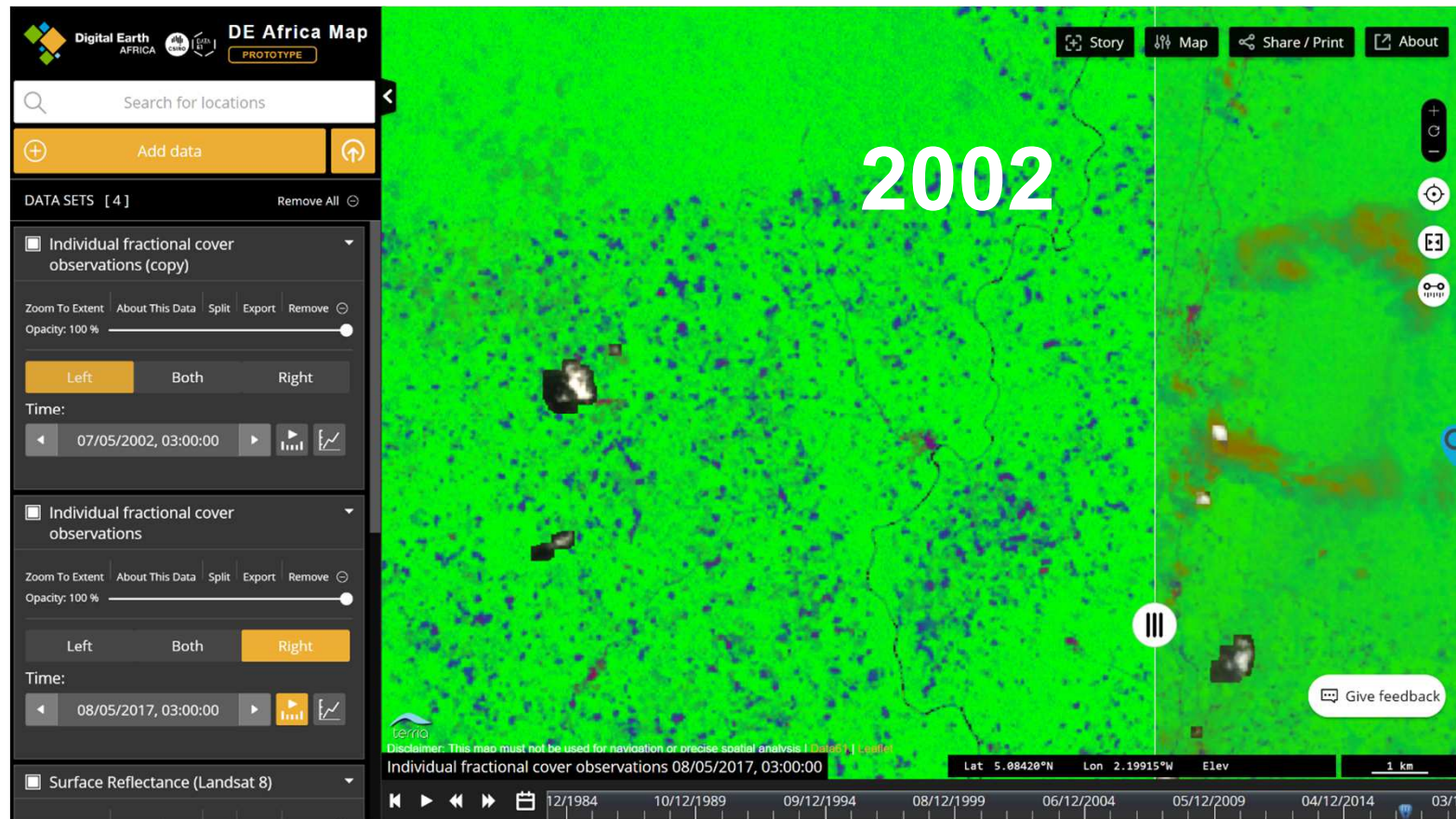
Stakeholders

- Geoscience Australia
- Group on Earth Observations (GEO)
- Committee on Earth Observations (CEOS)
- World Economic Forum
- South Africa National Space Agency (SANSA)
- Kenya Office of the Deputy President
- Ghana National Statistics Office
- Global Partnership for Sustainable Development Data
- CGIAR
- UNECA
- Africa Union
- AfDB
- RCMRD
- AGRHYMET

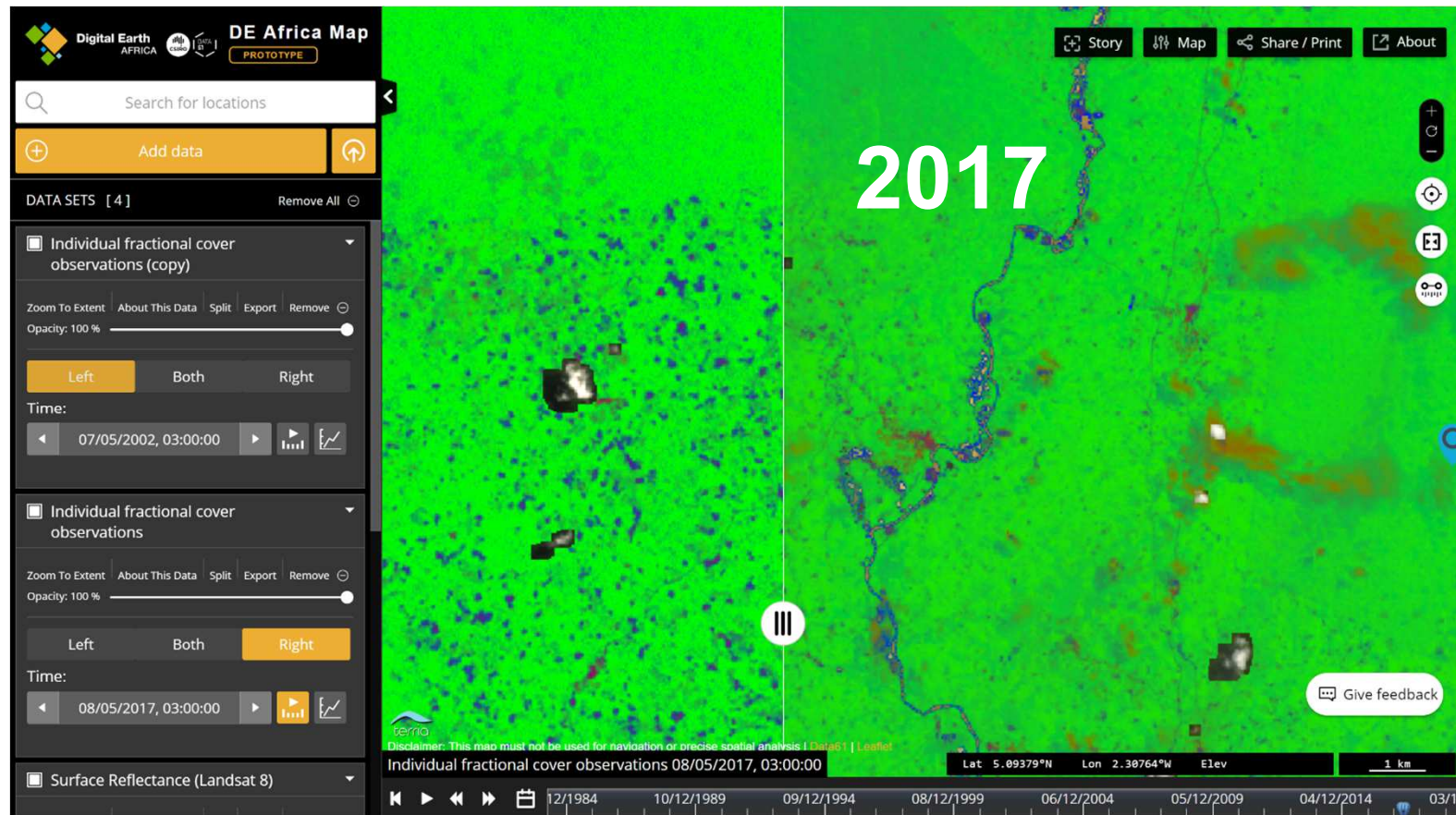
Phase 1 Steering Committee



Ghana - mining on the Ankobra River 2002-2017



Ghana - mining on the Ankobra River 2002-2017



Digital Earth Pacific.....



- Climate Change impacts
- Coastal change/ inundation
- Coral bleaching
- Maritime surveillance
- Marine water quality
- Agriculture
- Water
- Vegetation



Is it time for Digital Earth Latin America?

**Mexico, Columbia, Brazil,
Argentina, Chile.**

Q&A

www.digitalearthafrica.org

